

DIESEL GENERATING SET

DLW manufactures DG sets of 800 KW to 2400 KW capacity, using DLW built engines. These DG sets are suitable for standby as well as base load applications and are seismically qualified.

Alternators used are the state-of-the-art brushless type with microprocessor based AVR. Control system is PLC based, with fault diagnostic feature. The alarms and shut downs can be customized as per requirement.

Diesel Engine

- Engine
- Power Rating
- Cylinder arrangement
- Speed of engine
- Specific fuel consumption
- Cooling arrangement
- Control system
- Starting system
- Time for start
- Weight of engine
- Dimensions of engine(l x w x h)
- Periodicity of overhaul of engine
- Weight of DG set (with base frame)
- Dimensions of DG set (with base frame)

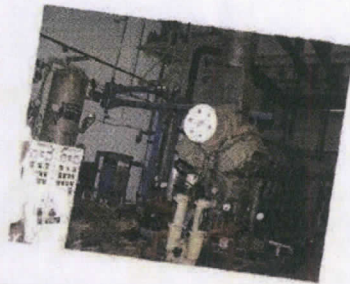
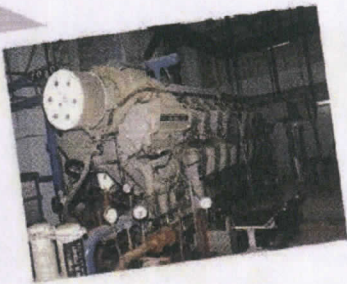
Transmission

- ALCO- 251
- 800 KW, 1500 KW, 1750 KW, 2000 KW, 2200 KW, 2400 KW.
- 45° Vee for 16&12 cyl. & inline for 6 cylinder
- 1000 rpm
- 153 gm/bhp-hr
- Radiator/ Heat exchanger
- PLC based
- Air motor/ DC motor
- Ready to take load in 10 seconds
- 20.0 t for 16 cylinder
14.6 t for 12 cylinder
11.1 t for 6 cylinder
- 5.3x1.6x2.4 m –16 cylinder
4.3x1.5x2.1 m –12 cylinder
3.6x1.6x2.2 m – 6 cylinder
- Top end - 10000 hrs
Major - 22000 hrs
- 52 t for 2400 KW
26 t for 800 KW
- 7.3x2.3x2.9 m for 2400 KW
6.3x2.3x2.9 m for 800 KW

DG SET

These DG Sets have been supplied and commissioned at NPCIL and working successfully

Presently these DG Sets are being manufactured for the Jamalpur workshop and Non Railway Customer (MAPS) Kalpakkam



DG SET

For enquiry contact:

***Chief Marketing Manager,
Banaras Locomotive Works,
Varanasi, INDIA, 221 004.***

Tel:0542-2642502, Fax-0542-2270101

Email:cmgm@dlw.railnet.gov.in

Website: <http://www.dlw.indianrailways.gov.in>

DG SET