

भारतीय रेल (रेल मंत्रालय)  
डीजल रेल इंजन कारखाना  
वाराणसी-२२१००४, भारत  
INDIAN RAILWAYS (MINISTRY OF RAILWAYS)  
DIESEL LOCOMOTIVE WORKS  
VARANASI-221004, INDIA



ISO-9001 14001

No. dlw.m.65.262

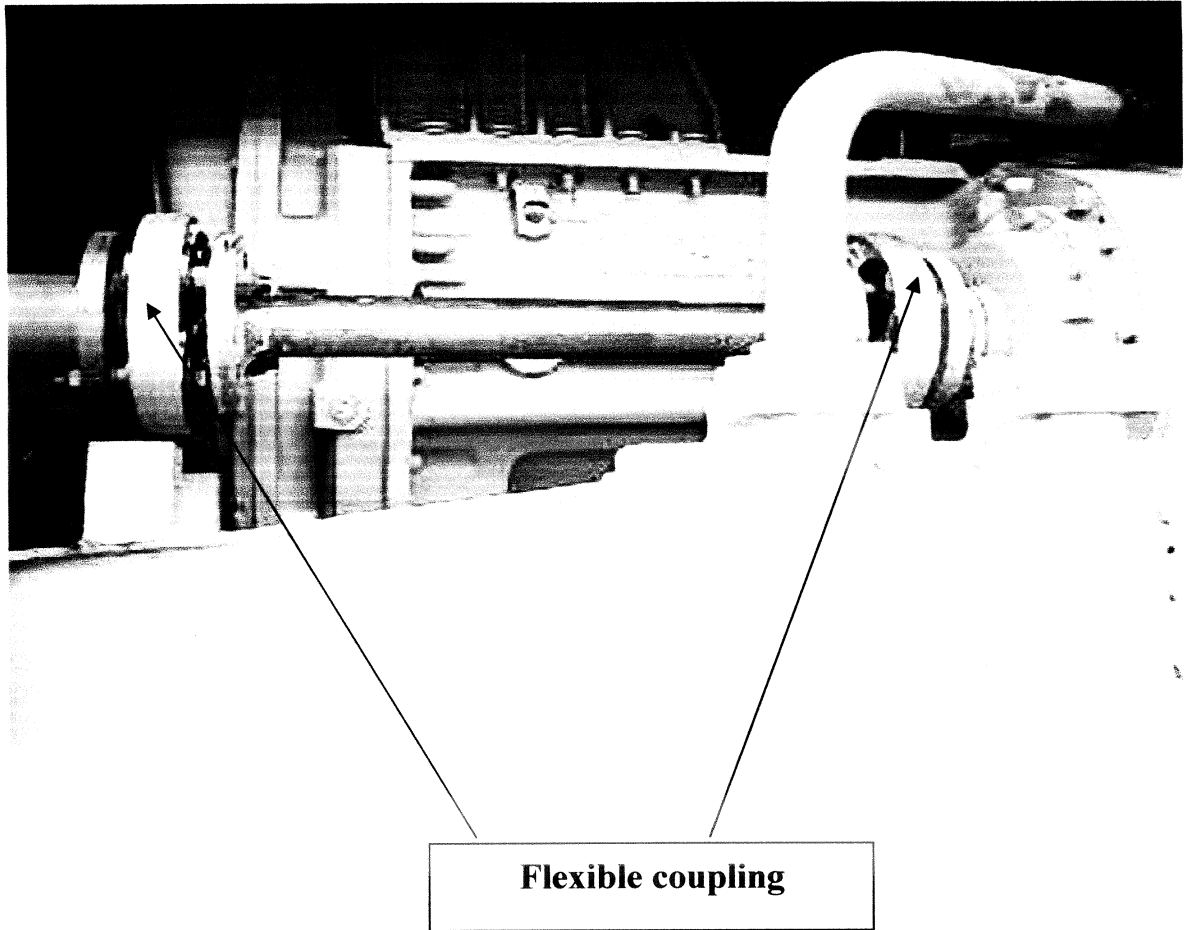
Date 03-01-2011

### DESIGN BULLETIN

1. **Design bulletin no. :** DB/02/2010/03 ( Modified )
2. **Subject** : Failure of Flexible coupling of Auxiliary generator drive shaft of EMD locos to part no 17320409.
3. **Background** : Sr DME/DSL/SBI reported 28 cases of failure of Flexible coupling due to rubber bush collar getting twisted and getting Cracked at the collar. (Ref Sr DME/DSL/SBI's L No. M/233/161/05/MIS dated 23.06.2010).
4. **Objective** : Failure investigation & suggesting corrective action for Eliminating / arresting failure of Flexible coupling problem.
5. **Details of study / Investigation –**
  - . Flexible coupling which are using by DLW are supplied by EMD. Based on complaints of Sr DME/DSL/SBI a letter was written to EMD for investigation & necessary action. In reply EMD has advised to DLW to follow the +/- 0.010" tolerance on the radial and angular alignment of auxiliary generator drive.
  - . DLW Shop has provided the data of 10 locos regarding radial and angular alignment of auxiliary generator drive before RRT and after RRT. The same was observed and found as under –  
Reading at Driven end found within 0.020" in 7 locos and reading of 3 locos are found 0.022", 0.027" and 0.029". The reading at Driving end is found 0.033" max. as against specified value of 0.050" in EAI 1691.

3  
G.P. 1/2011

8/C



**6. Corrective action:** As per above exercise it is concluded that the total Indicating Reading (TIR) of radial and angular alignment can be achieved within 0.020'' at Driven end and 0.050'' at Drive End and hence shop & concerned Diesel Shed should maintain these tolerance limit strictly.

**7. Drg/Spec/Test plan/QP modified :** Nil

**8. Implementation :** Loco Assembly Shop, concerned Diesel Shed

**9. Circulation :** CME/P, CQAM, DY CME/Loco, WM/LAS, SQAM, AWM/Test, SSE/LAS, SSE/Insp/Veh. , concerned Diesel Shed

*[Signature]*  
**DY CDE/Veh**

o/c